



Public Information and Scoping Meeting

Great Northern Transmission Line Project

Public Utilities Commission (PUC) Docket Number: E-015/CN-12-1163

February 11, 12, 13, 18, 19, 20 – 2014

Roseau, Baudette, International Falls, Thief River Falls, Bemidji,
Grand Rapids



AGENDA

- ▶ Introduction
 - Public Utilities Commission
- ▶ Certificate of Need Roles and Process
 - Public Utilities Commission
- ▶ Project Summary
 - Minnesota Power
- ▶ Environmental Review
 - Department of Commerce
- ▶ Citizen Comments and Questions



Public Utilities Commission

- ▶ **Regulates**
 - Permitting for power plants, pipelines, transmission lines
 - Local and in-state long distance telephone companies
 - Investor-owned electric and natural gas utilities – rates and services
- ▶ **5 Commissioners**
 - Appointed by the Governor
 - Serve staggered terms
 - Full time employment
- ▶ **50 staff**



Who's Who?

- ▶ **Applicant** – Company asking for Certificate of Need – *Minnesota Power*
- ▶ **Department of Commerce Energy Environmental Review and Analysis (EERA)** – State agency, conducts environmental review
- ▶ **Department of Commerce Energy Regulation & Planning** – State agency, represents the public interest when utilities ask to change rates, services, facilities
- ▶ **Office of Administrative Hearings (OAH)** – State agency, Administrative Law Judge (ALJ) holds hearings, summarizes the facts in the record, makes recommendations to Public Utilities Commission



Who's Who?

- ▶ **Public Utilities Commission (PUC) Public Advisor** – Helps citizens participate in the certificate of need and route permit processes. Neutral party, does not give legal advice, not an advocate.
- ▶ **Public Utilities Commission (PUC) Staff Analyst** – Assists in building the record. Informs Commissioners on impacts of different decisions. Neutral party, does not give legal advice, not an advocate.

Large Energy Facility

- Transmission line with capacity of 200 kilovolts (kV) or more *and*
- Greater than 1500 feet in length

–OR–

- Transmission line with capacity of 100 kV or more *and*
- More than 10 miles of its length in Minnesota *or* crosses state line
- Requires **Certificate of Need** from Minnesota Public Utilities Commission
 - Minnesota Statutes, Chapter 216B
 - Minnesota Rules, Part 7849



High Voltage Transmission Line

- Will operate at 100 kV or more *and*
- Greater than 1500 feet in length
- Requires **Route Permit** from Minnesota Public Utilities Commission
 - Minnesota Statutes, Chapter 216E
 - Minnesota Rules, Part 7850
- Route will be decided in a separate process

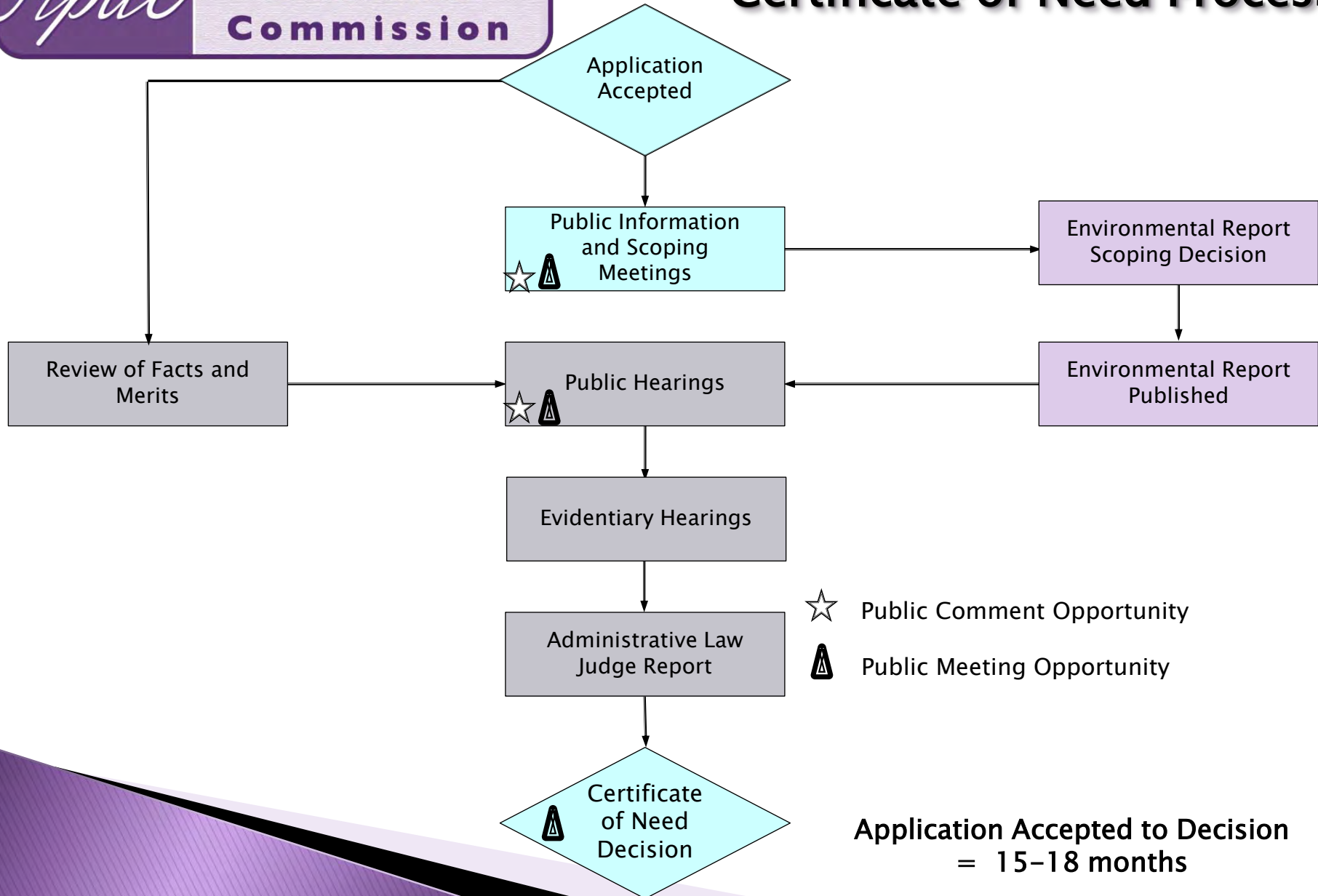
Factors considered in Public Utilities Commission's decision on the **need**

- ▶ What if the project isn't built?
 - Look at future of adequate, reliable, and efficient service for Minnesota and neighboring states
- ▶ Is there a better solution?
 - Review options for size, type, timing, cost, and reliability to find best solution

Factors considered (continued)

- ▶ Does the project fix the problem while protecting the environment?
 - Consider effect on wildlife, human health, and other social and economic factors
- ▶ Does the project meet other government requirements?
 - Work with other local, state, and federal agencies to make sure the project meets their requirements

High Voltage Transmission Line Certificate of Need Process



Estimated Project Timeline

Certificate of Need Application Filed	October 2013
Certificate of Need Application Accepted	December 2013
*Public Information & Scoping Meetings	February 2014
Comment Period Closes	March 14, 2014
Scope of Environmental Report	March 2014
Environmental Report Published	June 2014
Public Hearings	October 2014
Administrative Law Judge Report	March 2015
Certificate of Need Decision	May 2015

How do I get more information?

Department of Commerce Project Website

- ▶ <http://mn.gov/commerce/energyfacilities/Docket.html?Id=32989>

See all documents related to this project

- ▶ www.puc.state.mn.us
- ▶ Select *Search eDockets*
- ▶ Enter the year and the Docket Number
 - 12 is the year and 1163 is the number for certificate of need
 - 14 is the year and 21 is the number for route permit
- ▶ Select *Search*, and the list of documents will appear on the next page



How do I get more information?

Project Mailing List

- ▶ Receive information about project milestones and opportunities for citizen participation
 - Complete and return *Project Mailing List* card
 - Contact the Public Advisor
 - consumer.puc@state.mn.us
 - 651-296-0406 or 1-800-657-3782

How do I get even more information?

- ▶ **Subscribe** to receive email notification when new documents are added to the Docket
 1. www.puc.state.mn.us
 2. Select green box *Subscribe to a Docket*
 3. Type your email address
 4. For *Type of Subscription*, select *Docket Number*
 5. For *Docket Number*, select *12* in the first box, type *1163* in the second box (Certificate of Need)
 6. Select *Add to List*

Note – subscribing may result in a large number of emails

Additional Resources

- ▶ Department of Commerce
mn.gov/commerce/energyfacilities/
- ▶ Minnesota Statutes and Rules
www.revisor.leg.state.mn.us/
- ▶ Public Utilities Commission
www.puc.state.mn.us





PUC Project Contacts

Public Advisor
Public Utilities Commission
Tracy M.B. Smetana
consumer.puc@state.mn.us
Phone 651-296-0406
Toll Free 1-800-657-3782

Staff Analyst
Public Utilities Commission
Michael Kaluzniak
mike.kaluzniak@state.mn.us
Phone 651-201-2257

Project Summary – Minnesota Power

Environmental Siting and Permitting Manager
Minnesota Power

Jim Atkinson

jbatkinson@mnpower.com

Phone 218-355-3561

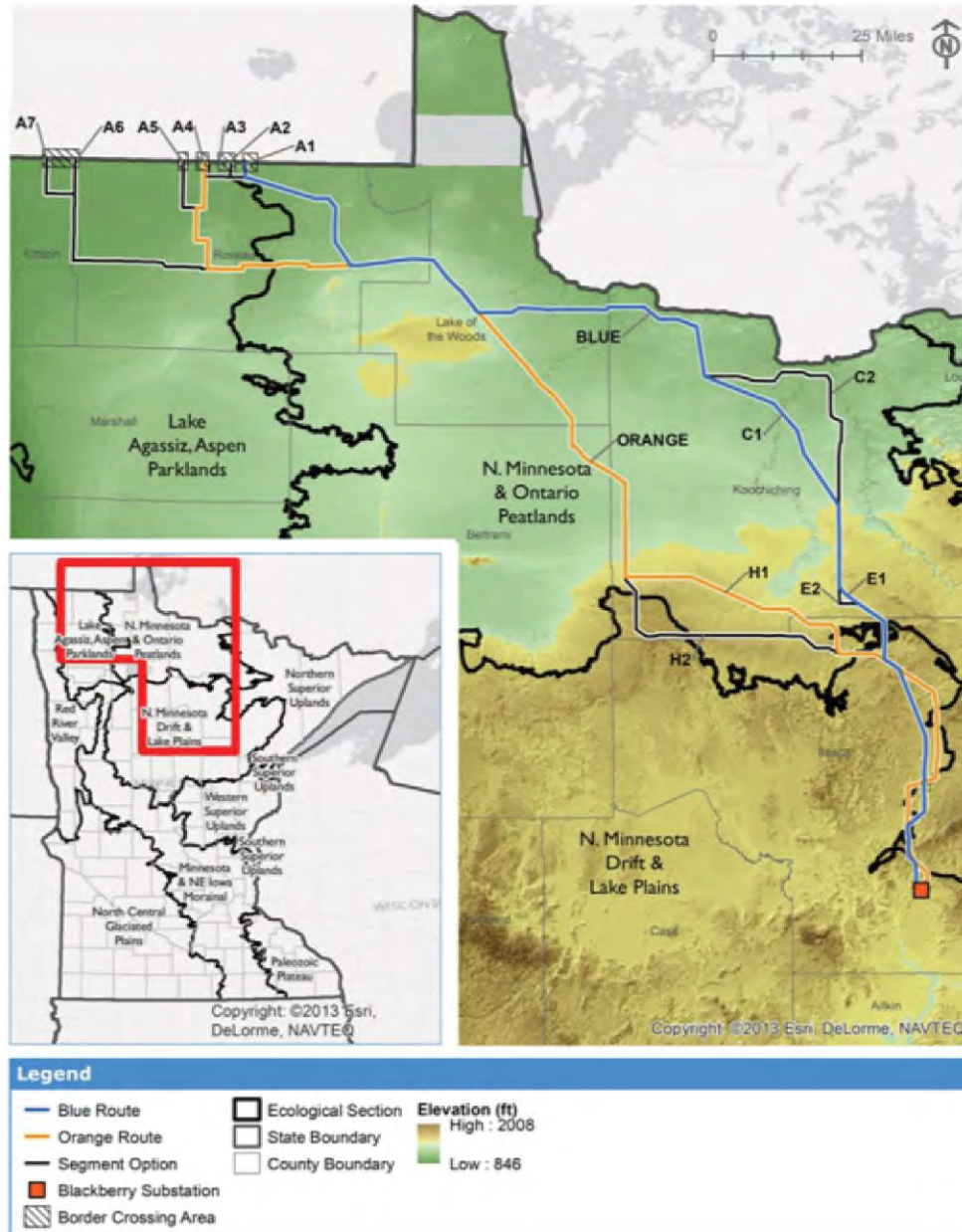


Great Northern Transmission Line

Jim Atkinson
February 2014

Route Alternatives

- 500kV single circuit transmission line
- 200-250 miles in length
- 200' ROW
- 1,000-1,450' spans
- 750MW capacity
- June 1, 2020 in-service date



Meeting Regional Needs

DIVERSITY

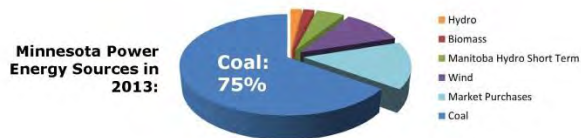
Provides access to clean, affordable, reliable energy for Minnesota Power customers and the region.

INCREASING DEMAND

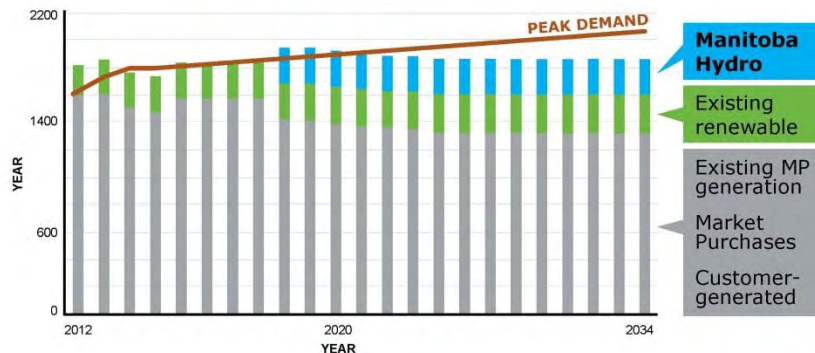
Helps to meet increased energy demand from Minnesota's Iron Range.

RELIABILITY

Strengthens system reliability for Minnesota Power and the region.

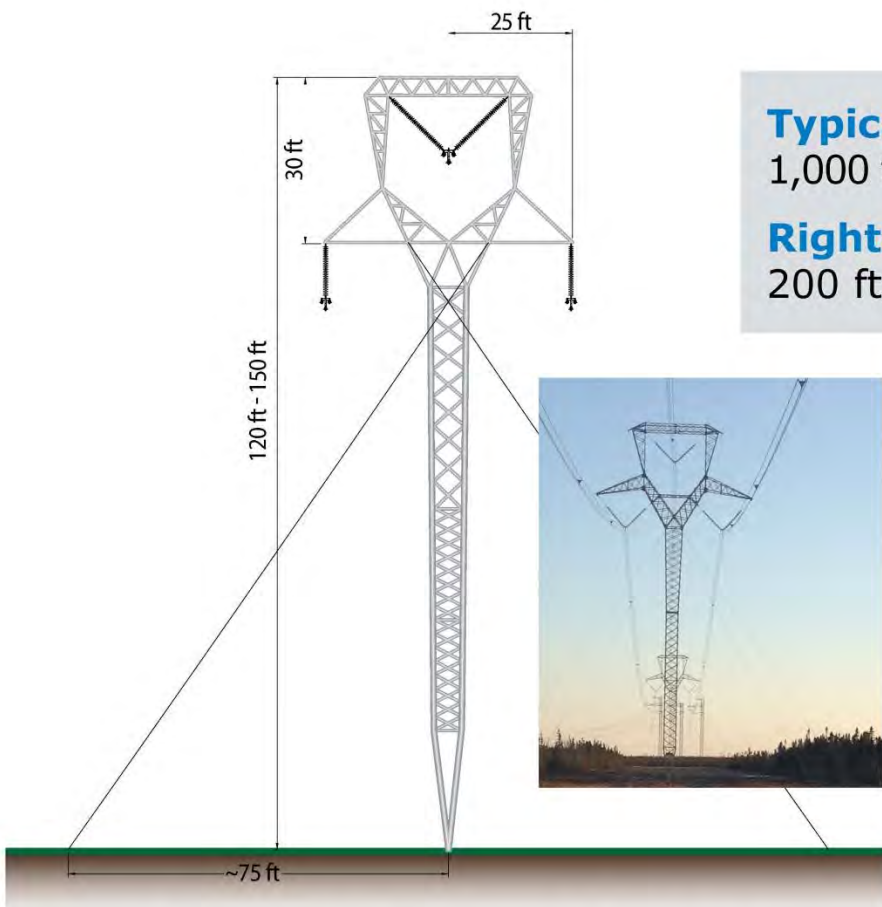


Minnesota Power Energy Sources in 2026



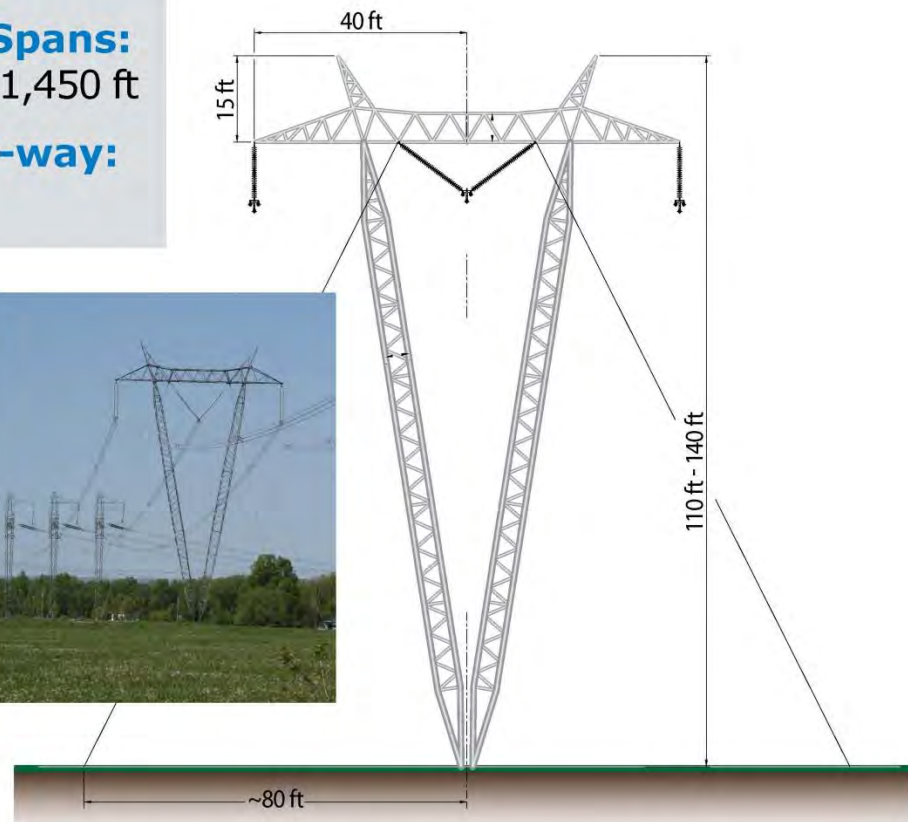
Preliminary 500 kV Structure Design

Predominantly in Remote & Wet Areas



**500 kV Guyed Delta
Suspension Tower**

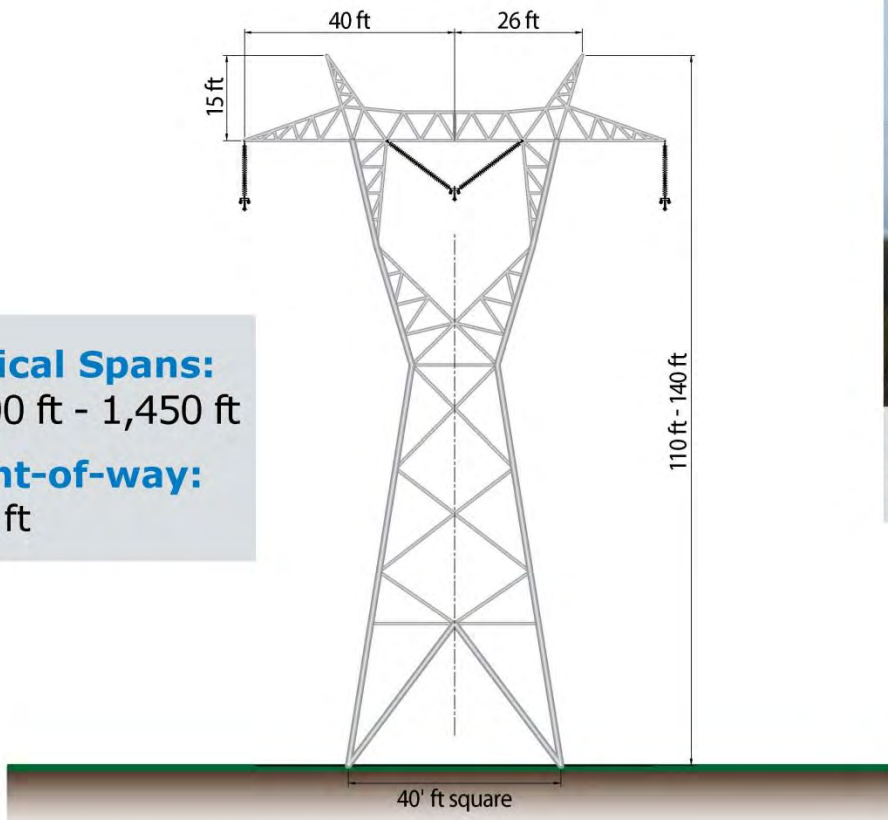
Typical Spans:
1,000 ft - 1,450 ft
Right-of-way:
200 ft



**500 kV Guyed-V
Suspension Tower**

These photos show a typical representation of existing transmission lines that are similar to the structures being considered for the Great Northern Transmission Line. The actual structure for the project may differ.

Preliminary 500 kV Structure Design



Typical Spans:
1,000 ft - 1,450 ft
Right-of-way:
200 ft

500 kV Self-Supporting
Suspension Tower



These photos show a typical representation of existing transmission lines that are similar to the structures being considered for the Great Northern Transmission Line. The actual structure for the project may differ.



Typical angle structure.

We Want Your Input!

How to stay informed and give us your input:



- Visit our website at:
www.greatnortherntransmissionline.com
- Submit a comment at a meeting or online
- Call our toll-free information line:
877.657.9934
- Join our mailing list
- Email us at:
info@greatnortherntransmissionline.com

Department of Commerce



Environmental Review Manager
Department of Commerce
Energy Environmental Review and Analysis (EERA)

Bill Storm

bill.storm@state.mn.us

Phone 651-539-1844

Toll Free 1-800-657-3794

ER SCOPING MEETING

**MINNESOTA POWER
CERTIFICATE OF NEED DOCKET
GREAT NORTHERN TRANSMISSION LINE PROJECT
Environmental Document Scoping
Meeting**

**Minnesota Department of Commerce
Energy Environmental Review & Analysis**



Environmental Review

- The Energy Environmental Review & Analysis staff prepares an Environmental Report (ER) on proposed large electric facilities that come before the PUC for a determination of need (Minn. Rules 7849.1200).
- The ER must contain information on the human & environmental impacts of the proposed project associated with the size, type, and timing of the project, system configurations, and voltage.



Environmental Review

The environmental review document under the certificate of need procedures (Minnesota Rules 7849.1500, subpart 1) must include the following:

- A general description of the proposed project and associated facilities;
- A general description of the alternatives to the proposed project; these shall include:
 - The no-build alternative,
 - Demand side management;
 - Purchased power;
 - Facilities of a different size or using a different energy source;
 - Upgrading of existing facilities;
 - Generation rather than Transmission; and
 - Use of renewable energy sources.
- An analysis of the human and environmental impacts of a project of the type proposed and of the alternatives identified;
- Analysis of the potential impacts that are project specific;
- An analysis of mitigative measures that could reasonably be implemented to eliminate or minimize any adverse impacts identified for the proposed project and each alternative;
- An analysis of the feasibility and availability of each alternative considered;
- A list of permits required for the project; and
- A discussion of other matters identified in the *Scoping Decision*.



Environmental Review - Scoping Alternatives & Impacts

A person desiring that a particular alternative to the proposed project or a possible adverse impact of the project be considered in the environmental report shall:

- identify the alternative or impact to be included;
- provide an explanation of why the alternative or impact should be included in the environmental report; and,
- submit all supporting information the person wants the commissioner to consider.

The Commissioner shall provide the applicant with an opportunity to respond to each request that is filed

Environmental Review - Scoping Alternatives & Impacts

The Commissioner may exclude from analysis any alternative that:

- does not meet the underlying need for or purpose of the project, or
- that is not likely to have any significant environmental benefit compared to the project as proposed, or
- if another alternative that will be analyzed is likely to have similar environmental benefits with substantially less adverse economic, employment, or sociological impacts than the suggested alternative.

The Department shall include in the environmental report any alternative or impact identified by the Commission for inclusion in the ER document.

Draft Scoping Document

{suggested impact(s) to be addressed}

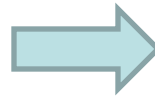
**DRAFT
ENVIRONMENTAL REPORT
SCOPING DOCUMENT**

**GREAT NORTHERN TRANSMISSION LINE PROJECT
PUC DOCKET No. E015/CN-12-1163**

Prepared by the Staff of the



January 31, 2014



4.0 ENVIRONMENTAL AFFECTS

- 4.1 Air Quality
- 4.2 Biological Resources
- 4.3 Culture Resources
- 4.4 Geology and Soils
- 4.5 Health and Safety
- 4.6 Land Use
- 4.7 Noise
- 4.8 Socioeconomics
- 4.9 Transportation
- 4.10 Visual Impacts



4.5.1 Electric & Magnetic Fields

Draft Scoping Document

{suggested alternative(s) to be addressed}

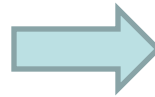
DRAFT
ENVIRONMENTAL REPORT
SCOPING DOCUMENT

GREAT NORTHERN TRANSMISSION LINE PROJECT
PUC DOCKET No. E015/CN-12-1163

Prepared by the Staff of the



January 31, 2014



- 3.0 ALTERNATIVES TO THE PROPOSED HVTL
 - 3.1 No-build Alternative
 - 3.2 Demand Side Management
 - 3.3 Purchase Power
 - 3.3.1 Long term Purchase Power
 - 3.3.2 Short term Purchase Power
 - 3.4 Alternative Fuels
 - 3.4.1 Fossil Fuel Technologies
 - 3.4.2 Renewable Resource Technologies
 - 3.5 Up-grading Existing Facilities
 - 3.6 Facilities of a Different Size
 - 3.7 New Generation



**3.6.1 Alternative Voltage –
765 kV Alternative**

DUE DATE FOR COMMENTS

March 14, 2014

SEND COMMENTS TO:

Bill Storm

Minnesota Department
of Commerce

85 7th Place East

Suite 500

St. Paul, MN 55101

bill.storm@state.mn.us

651-539-1844





Thank you for attending